



Meditation Guide

Stations of the Cross for Our Time

Art by

Ann Hatch

Reflections by

Judy Ulitchny

St. Michael the Archangel Press

The devotional art installation “Stations of the Cross for Our Time” by **Ann Hatch** was designed for the season of Lent 2020. It was inspired by Barnett Newman’s “The Stations of the Cross: Lema Sabachtani” on display at The National Gallery of Art in Washington, DC, and by *Meditations on the Way of the Cross* by the late Fr. Edward Hays, priest of the Archdiocese of Kansas City in Kansas.

This installation is accompanied by the writings of **Judy Ulitchny** contained in this *Meditation Guide*.



I Jesus is condemned to die

How do I respond when I am
“condemned”?

Am I aware when others are
condemned due to their invisibility,
beliefs, lifestyle or life choices?

Lord, let us remember the spiritually
and physically imprisoned



II Jesus picks up his cross

How can I respond when a cross is
placed on my shoulders or comes
into my life?

What things do I consider to be a
cross?

Through ignorance, lack of
compassion or lack of forgiveness
could I be a cross to another?

Lord, let us be strong



Jesus falls for the first time

When I am brought low, how do I
find the strength to get back up?

We all fall and it can be a shock.

What's my reaction when someone
falls?

Lord, gift to us the Faith and Grace to
get back up



Jesus meets his mother

In the midst of suffering, the sight of
a loved one!

How am I affected?

Walking with another, a loved one,
through the dark times

where do you draw strength for the
accompanying?

Lord, give us the wisdom to be
present and to accept presence



Simon helps to carry the cross

Are you open to letting others help
when you need it?

When have you been willing, daring
enough to offer help?

Where will you find your Simon
today?

Lord, let us step forward freely as a
Simon

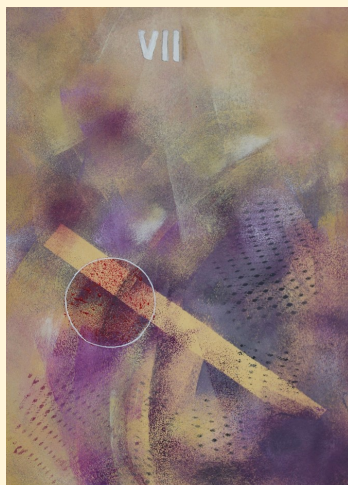


Veronica wipes the face of Jesus

Can you see and accept a tender gift
of comfort when you are hurting?

Are you willing to risk rejection and
judgement to help another?

Lord, give us the wisdom to offer care
and the humility to accept it



Jesus falls a second time

When life or your own weakness
brings you to your knees, *again*, to
whom do you turn?

Can we reach out in compassion to
those who through their own fault
or life's random cruelties fall time
and again?

Lord, may we have compassion for
ourselves and all who fall

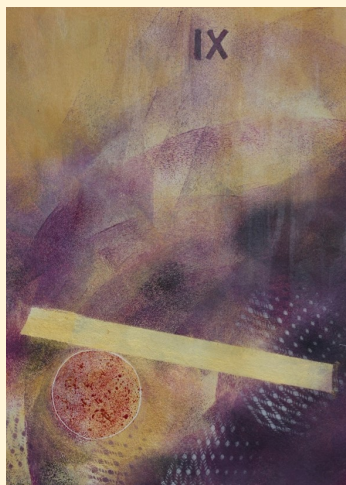


Jesus meets the women

Can you approach, without fear, the
condemned and excluded?

Can we join with others on this
journey?

Father, may we be truly one

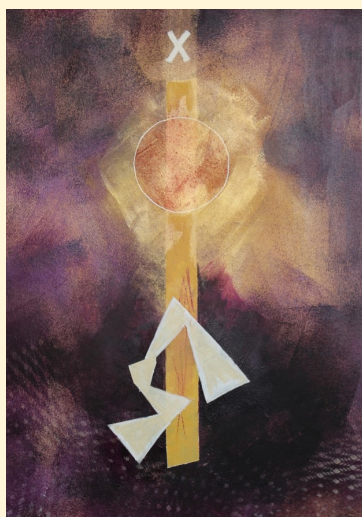


Jesus falls a third time

When you hear the diagnosis, when
you slip again, when you fear
there is no purpose or hope how do
you rise and carry on?

How did Jesus find the strength to
carry on?

Lord, let us recall those who need
help and hope



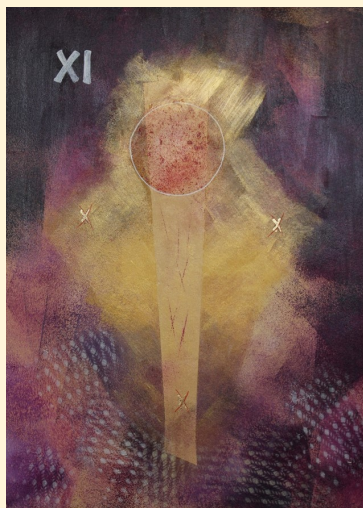
Jesus is stripped of his garments

Life strips all of us eventually.

What do we fear losing?

When you see another's
nakedness . . . either their pain,
their weaknesses or their aloneness,
can you respond?

Lord, give us the grace to accept
what is lost



Jesus is nailed to the cross

Cruelty, can it be winning?

How do we not despair?

Lord, let us stand against cruelty,
bullying and hatred



Jesus dies

All your hopes, dreams,
plans and desires are ashes.

Now what?



Jesus is taken down from the cross

In your heart, you hold the lost who
are cherished still.

Lord, send us comfort as we grieve



Jesus Is Laid In the Tomb

Father, wait with us
in the quiet and darkness

The Main Event

The Main Event happened
three days later, unheralded
with no crowds, no witnesses.

In the deep Quiet,
lit only by the faint light
just before sunrise,
Love triumphed gently.
Triumph is not riding into
adoring, exultant crowds.
Love's triumph, more powerful
than that, rolls away stones
comes out of tomb darkness.

Love IS!
Compassion tenderly
reveals the power of Love.
The whole point of it all:
The empty tomb!
The point of it all:
God is love. Love one another.



Ann Hatch

Ann Hatch has been a member of St. Michael The Archangel since the beginning of the parish. She is a former art teacher and has always incorporated her love of art and design in her daily life. Her faith has inspired much of her art as have her travels and life experiences. Her faith-based art takes a contemporary approach. Generally, Ann uses mixed media collage as her form of expression but for The Stations of the Cross has returned to painting.



Judy Ulitchny

Idle hands . . . not healthy for body or soul! After retiring, I sought ways to serve . . . food pantry, Stephen Ministry . . . and more time to pray. Read an interesting book - *The Faith Club* - and began a group modeled on that book. For the last four years our Faith Club has met monthly—three Christian, three Jewish and four Muslim women. A journey that has deepened my walk with Christ. The writing and my art came out of my prayer journaling.

Working on this project has been a blessing. Following Mary's example, it required me to 'ponder these things in my heart.' Meditating on the Way of the Cross is a gift. My prayer is that this Way of the Cross brings others to ponder, to open the gift of Love offered on Calvary.



St. Michael the Archangel Catholic Church
14251 Nall Avenue, Leawood, Kansas 66223

